



***Y PWYLLGOR
CYNLLUNIO***

19 EBRILL 2017

***RHANBARTH Y
GORLLEWIN***

**PLANNING
COMMITTEE**


19 APRIL 2017

**AREA
WEST**



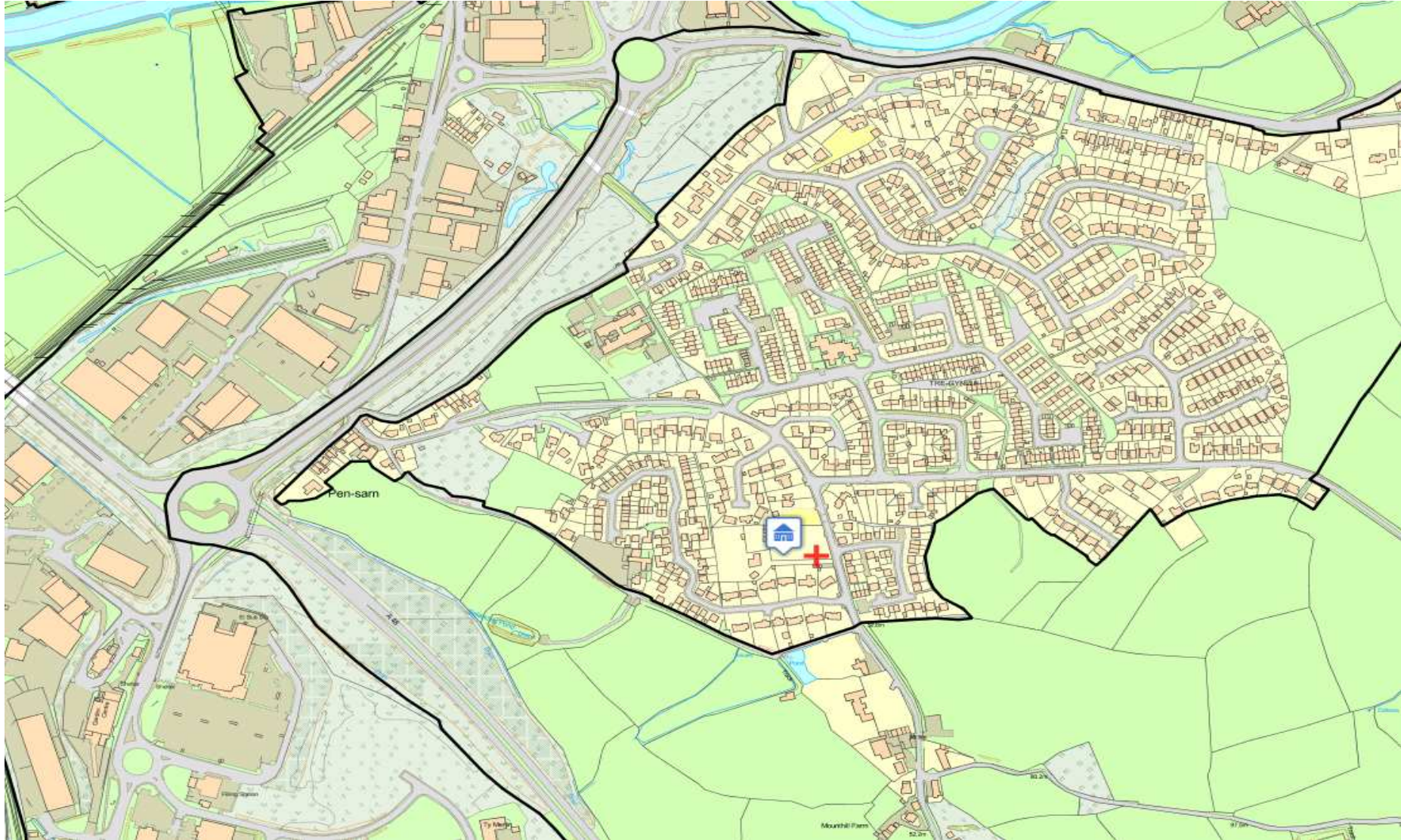
***CEISIADAU YR ARGYMHELLIR EU
BOD YN CAEL EU GWRTHOD***

**APPLICATIONS RECOMMENDED
FOR REFUSAL**

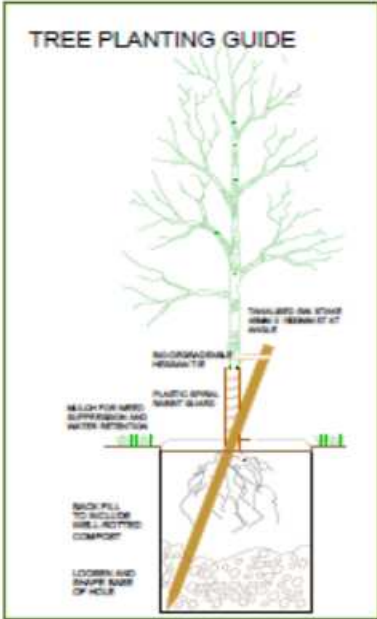
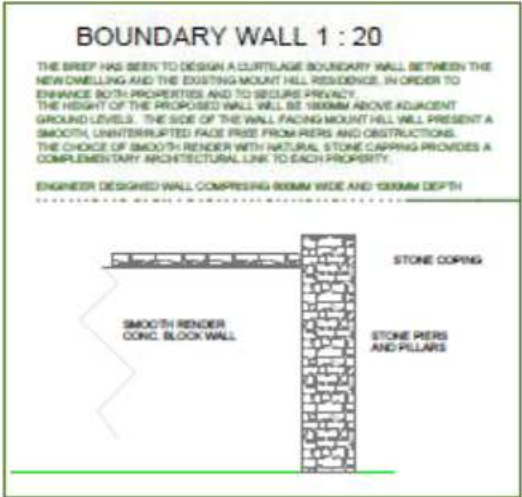
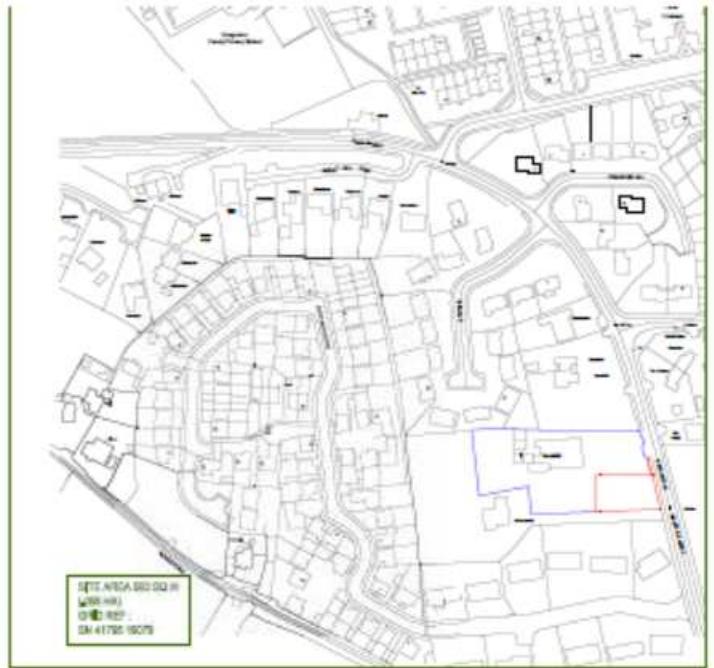
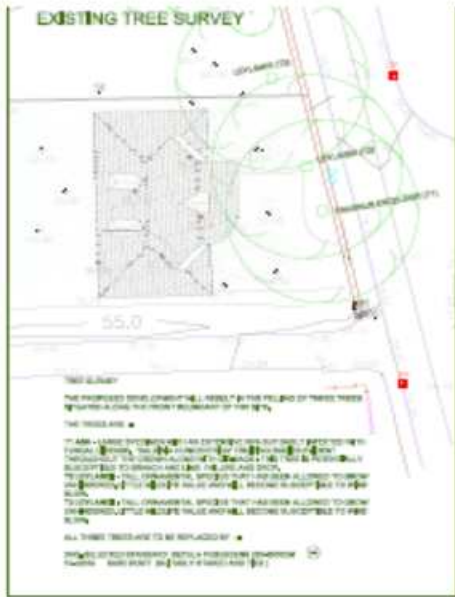
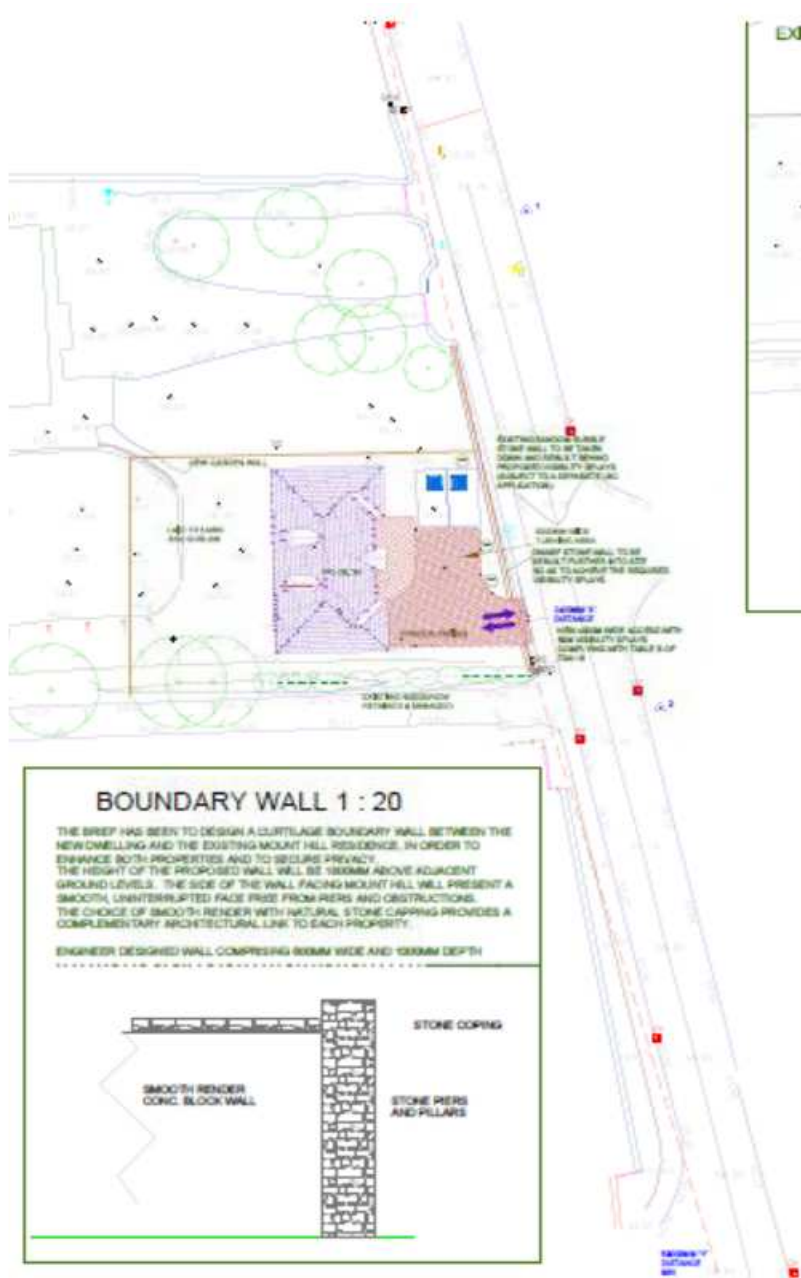


W/34901 and W/34931

W/34901 and W/34931



W/34901 and W/34931



PROPOSED DWELLING

LAND PART OF MOUNT HILL, LANGUNNOR, CARMARTHEN, SA31 2JZ.

LOCATION, SITE LAYOUT AND TREE SURVEY

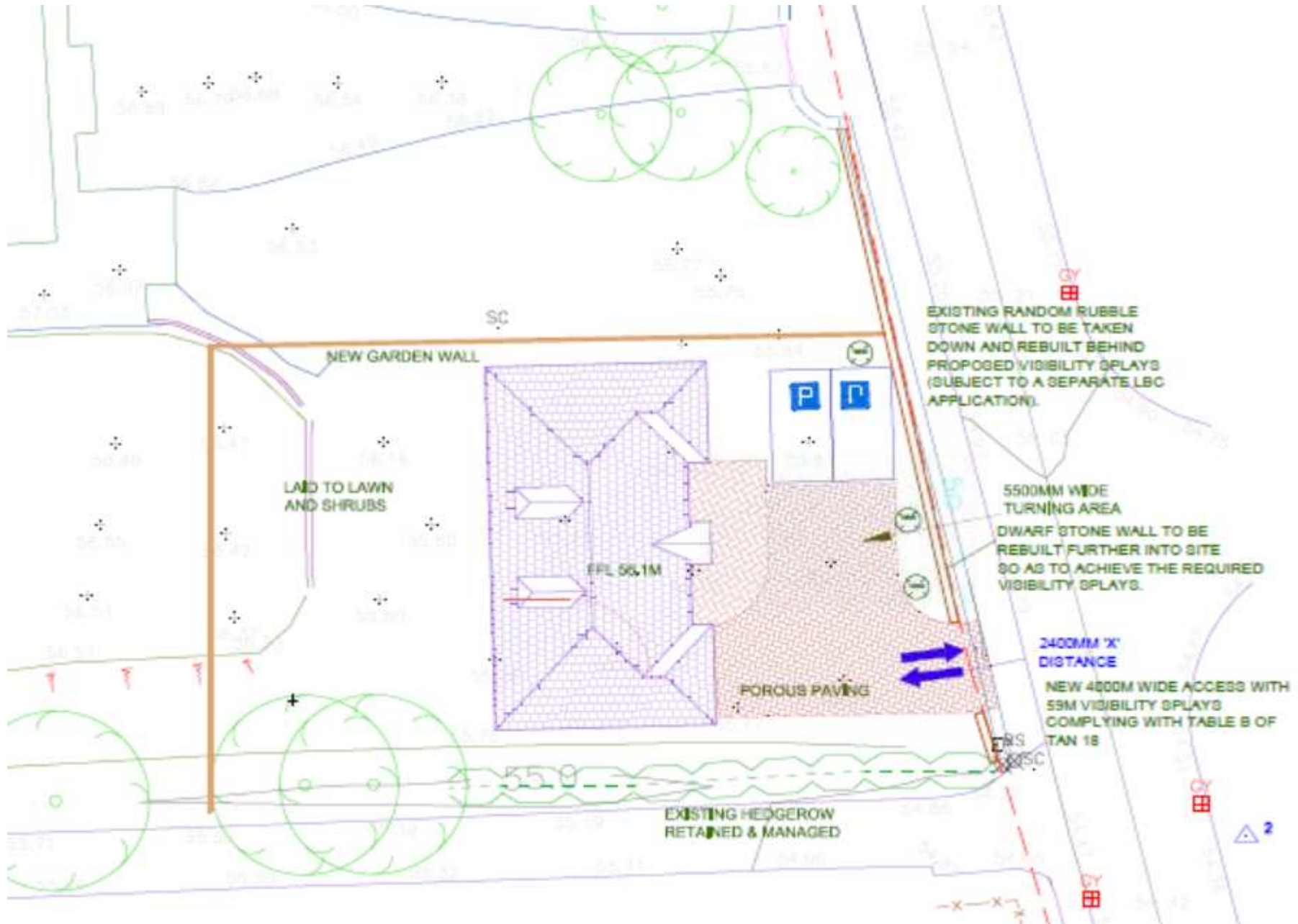
SCALE 1 : 200 1250 30 @ A1

DRAWING NO. - COMPLIANCE - DATE 14/06/2018

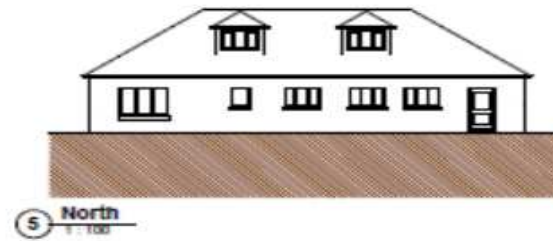
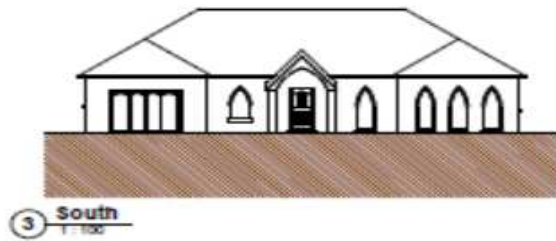
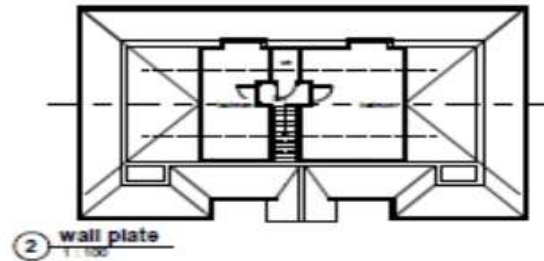


UNLITTING TREE PLANNING AND DEVELOPMENT CONSULTANTS
 UNIT 1, LANGUNNOR BUSINESS CENTRE, 100, THE WALK, LANGUNNOR, CARMARTHEN, SA31 2JZ
 TEL: 01493 81111

W/34901 and W/34931



W/34901 and W/34931



W/34901 and W/34931



W/34901 and W/34931



W/34901 and W/34931



W/34901 and W/34931



W/34901 and W/34931



W/34901 and W/34931



W/34901 and W/34931



W/34901 and W/34931



W/34901 and W/34931



W/34901 and W/34931



W/34901 and W/34931

